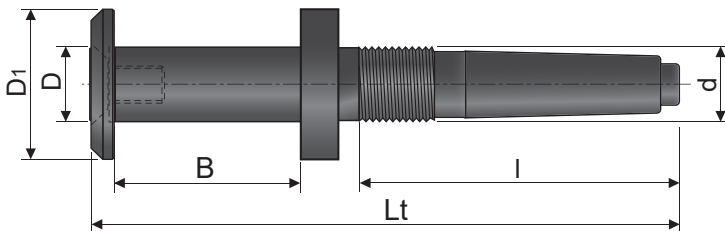


MANDRINI PORTAFRESE CON ATTACCO CILINDRICO

Tools'holders with cylindric shank
Werkzeughalter mit zylindrische Aufnahme
Portaherramientas con ataque cilíndrico

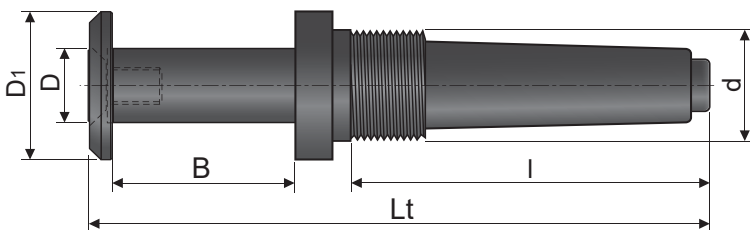
| CODICE CODE | D mm | D1 mm | B mm | Lt mm | ATTACCO / SHANK | | ROTATZ. ROTAT. |
|----------------|--------------|----------|---------|----------|-----------------|------|-------------------|
| | | | | | d mm | l mm | |
| ALB01 | 20 - 25 - 30 | 40 | 50 | 120 | 20 | 50 | R |
| ALB02 | 20 - 25 - 30 | 40 | 50 | 120 | 20 | 50 | L |
| ALB03 | 20 - 25 - 30 | 40 | 50 | 120 | 25 | 55 | R |
| ALB04 | 20 - 25 - 30 | 40 | 50 | 120 | 25 | 55 | L |



MANDRINI PORTAFRESE CON ATTACCO CONO MORSE 2

Tools'holders with shank MK2
Werkzeughalter mit MK2 Aufnahme
Portaherramientas con ataque MK2

| CODICE CODE | D mm | D1 mm | B mm | Lt mm | ATTACCO / SHANK | | ROTATZ. ROTAT. |
|----------------|--------------|----------|---------|----------|-----------------|------|-------------------|
| | | | | | d mm | l mm | |
| ALB10 | 20 - 25 - 30 | 40 | 50 | 155 | MK2 - M20x1,5 | 85 | R |
| ALB11 | 20 - 25 - 30 | 40 | 50 | 155 | MK2 - M20x1,5 | 85 | L |
| ALB12 | 20 - 25 - 30 | 40 | 50 | 155 | MK2 - M30x1,5 | 85 | R |
| ALB13 | 20 - 25 - 30 | 40 | 50 | 155 | MK2 - M30x1,5 | 85 | L |



MANDRINI PORTAFRESE CON ATTACCO CONO MORSE 3

Tools'holders with shank MK3
Werkzeughalter mit MK3 Aufnahme
Portaherramientas con ataque MK3

| CODICE CODE | D mm | D1 mm | B mm | Lt mm | ATTACCO / SHANK | | ROTATZ. ROTAT. |
|----------------|--------------|----------|---------|----------|-----------------|------|-------------------|
| | | | | | d mm | l mm | |
| ALB20 | 20 - 25 - 30 | 40 | 50 | 165 | MK3 - M30x1,5 | 95 | R |
| ALB21 | 20 - 25 - 30 | 40 | 50 | 165 | MK3 - M30x1,5 | 95 | L |